



## Product summary

**IOblend** is an advanced enterprise DataOps software developed by Connect.IO Ltd. The software allows you to build and manage your data integrations with production-grade dataflows out-of-the-box: from the simple to the most complex, significantly speeding up development effort and reducing the costs of data projects and data science initiatives.

Powered by our revolutionary engine and utilising the efficiency of Apache Spark™, IOblend takes Data Engineering and Data Management to the next level. Connect to any source, perform on-the-fly transforms of streaming and batch data, and sink the results to any destination with little effort. Automatically create and manage data lakes and data warehouses in the cloud, on-prem and hybrid environments. Know what your data does in real time all the time – full logging, lineage at a record level, metadata, CDC, time travel, windowing, state management, DQ, and MLOps feature engineering built in. Empower your data developers to easily work with the data while resting assured it will be automatically robust and fully looked after by our software.

IOblend now allows embedding of AI agents directly into the workflow via the transforms, so you can add advanced logic to the data manipulation and make decisions on the fly.

### Recommended (min) system requirements:

Processor: Processor speed of 3 GHz (2 GHz) or higher is better - Intel or AMD  
RAM: 16 gigabytes+ (4 GB)  
HDD: 30 GB of storage space (10 GB) – SSD will be much quicker  
GPU: Any Microsoft DirectX 9/10 graphics device  
Screen Resolution: 1024 x 768+  
Broadband Internet connection

## Installation guide

### IOblend Developer Suite installation – Win OS

Download and install IOblend Developer Suite. IOblend Developer Suite is FREE to use for development purposes only for as long as you need it - experience the full power of IOblend at your own pace.

Make your data estate “state-of-the-art”

Note: This version is not intended to be used for production, please contact us for the Enterprise version if you want to deploy IOblend in production.

1. Visit IOblend [Download](#) web page or click [here](#) to fill in the registration form.
  - Once you have completed and submitted the form, you will see the download link in the confirmation message on the same screen.
  - Select a Windows or Mac version (individual links).
  - Please do not leave the page before you see the link. Click on your selected version and the download will begin.
  - Note: your Firewall and Antivirus suites may flag the file as “risky”, depending on your settings. Adjust to let it pass through.
2. Extract the zipped file onto your local machine.
  - Ensure the installation is fully on your local environment or the software would not work.
  - Please install it on your **C-Drive**.
  - IOblend does not provide infrastructure – you install and run it entirely within your own infrastructure and associated security protocols. In your local Dev environment, IOblend will utilise your local resources (CPU, RAM). In the Enterprise version, you can run IOblend in the Cloud, Data centres, or on-prem.

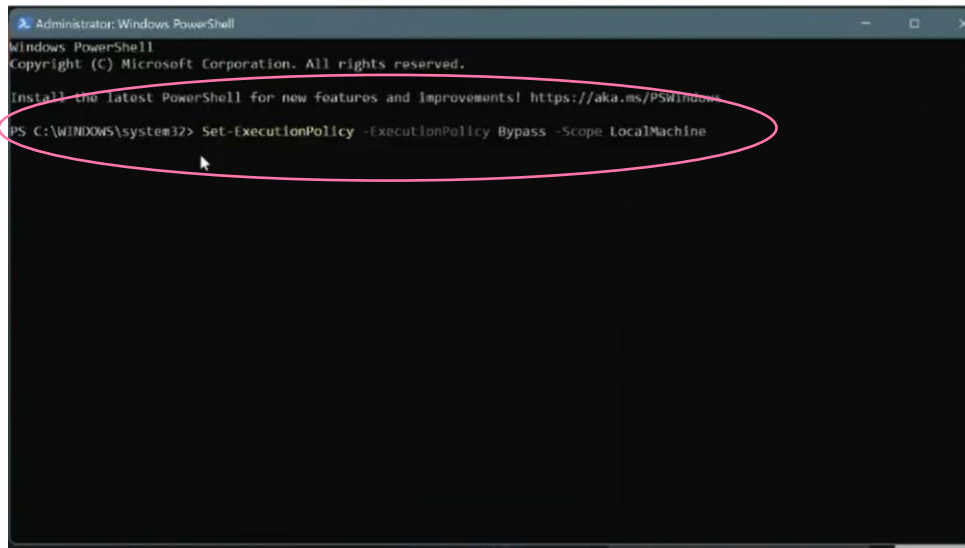
Note: IOblend Developer Suite comes unpacked – once unzipped, you no longer need to run a separate “install” command.

**Important:** Please ensure your Win OS allows you to run scripts.

Note: Only perform the next step if you are unsure whether your Win OS allows you to run scripts. If it can, skip to Step 4.

3. Run Windows PowerShell with the following command:
  - **Set-ExecutionPolicy -ExecutionPolicy Bypass -Scope LocalMachine**

- Hit Enter

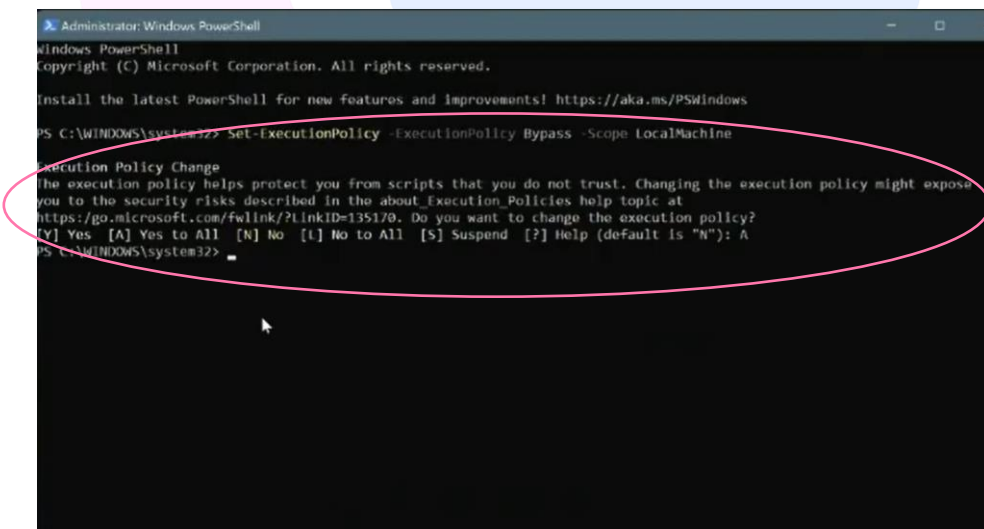


```
Administrator: Windows PowerShell
Windows PowerShell
Copyright (C) Microsoft Corporation. All rights reserved.

Install the latest PowerShell for new features and improvements! https://aka.ms/PSWindows

PS C:\WINDOWS\system32> Set-ExecutionPolicy -ExecutionPolicy Bypass -Scope LocalMachine
```

- When prompted, select A (Yes to All). Hit Enter.



```
Administrator: Windows PowerShell
Windows PowerShell
Copyright (C) Microsoft Corporation. All rights reserved.

Install the latest PowerShell for new features and improvements! https://aka.ms/PSWindows

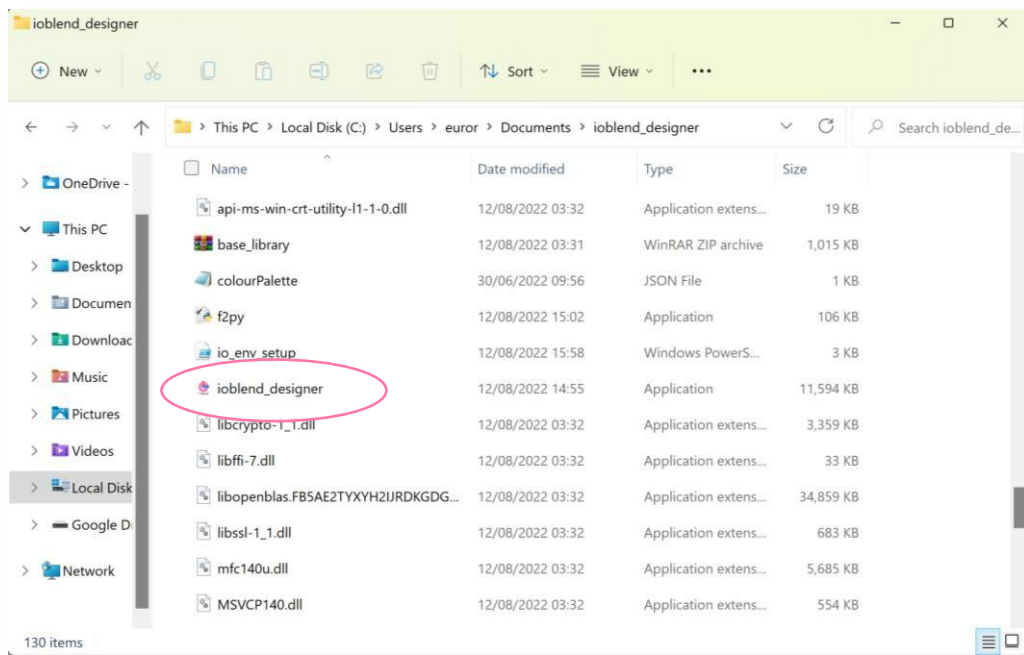
PS C:\WINDOWS\system32> Set-ExecutionPolicy -ExecutionPolicy Bypass -Scope LocalMachine

Execution Policy Change
The execution policy helps protect you from scripts that you do not trust. Changing the execution policy might expose
you to the security risks described in the about_Execution_Policies help topic at
https://go.microsoft.com/fwlink/?linkid=135170. Do you want to change the execution policy?
[Y] Yes [A] Yes to All [N] No [L] No to All [S] Suspend [?] Help (default is "N"): A
PS C:\WINDOWS\system32>
```

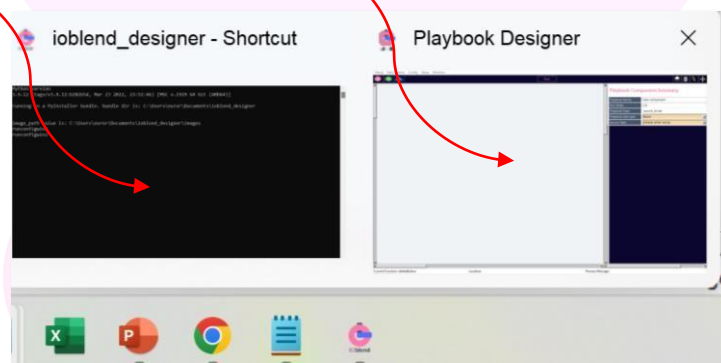
- Your Win OS will now allow you to run scripts.

**Important:** Please ensure your firewall and antivirus “trust” IOblend and its associated components (such as Spark, Python, etc). Experiment with your firewall settings as required.

4. Locate the IOblend folder in Explorer. Scroll to the Application called “ioblend\_designer”. Right-click to create shortcut and place where it is convenient for you. Then, click to launch the application.



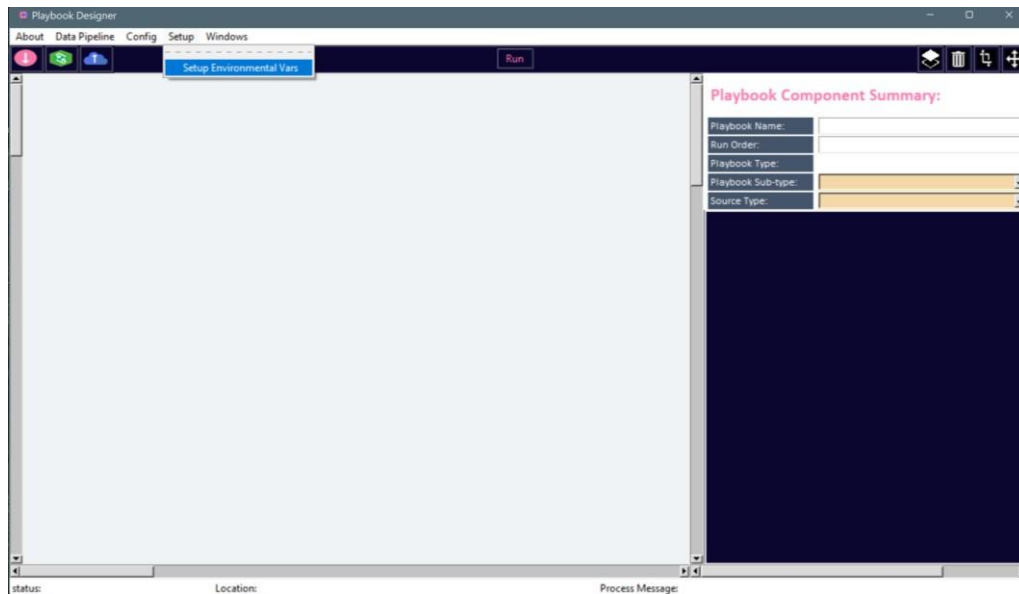
5. Once IOblend is running (it will have two windows running in the background: Script and Playbook Designer).



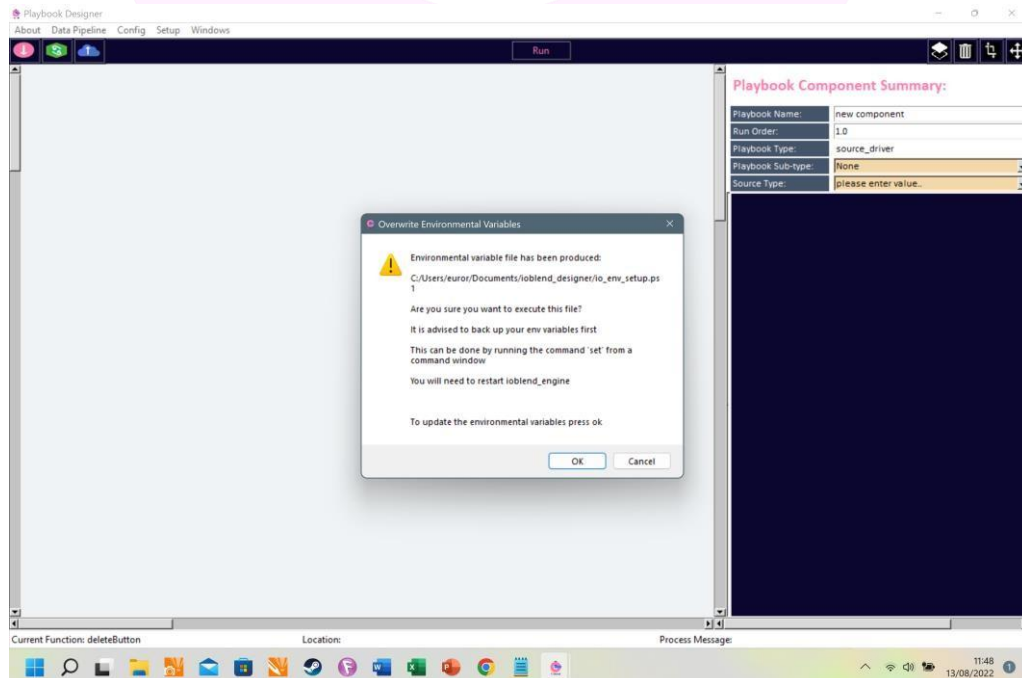
- Select the Playbook Designer.

6. Next, we will need to let IOblend set up its environmental parameters.





- Click “Setup ---> Setup Environmental Vars”.
- A pop-up box will appear and advise you back up the existing OS environmental variables.
- Before pressing OK, we **strongly** recommend that you back up your current Environmental Vars – see step 7 how to do that.

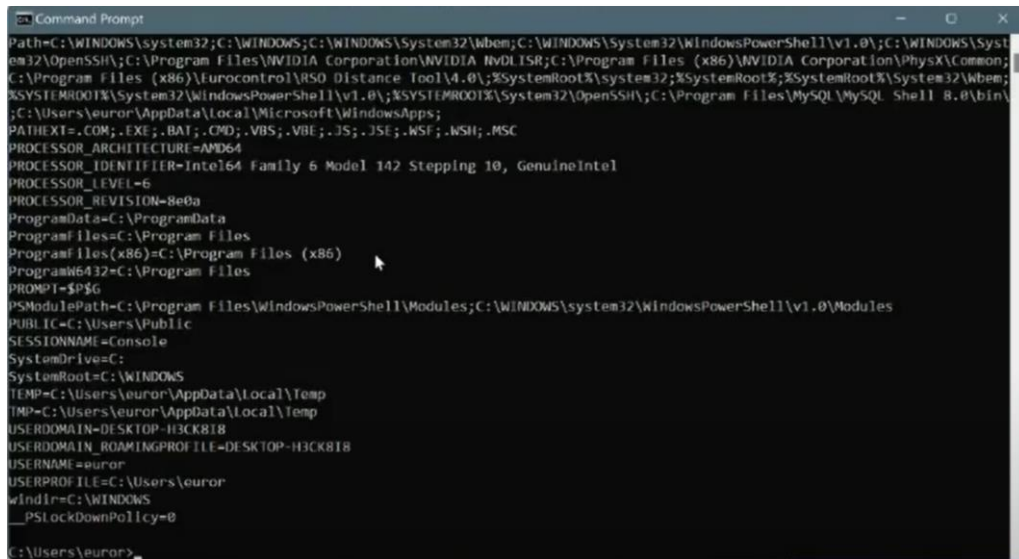


## 7. We always strongly advise to make back-ups.

- For this, you will need to run the OS Command prompt and type Set.

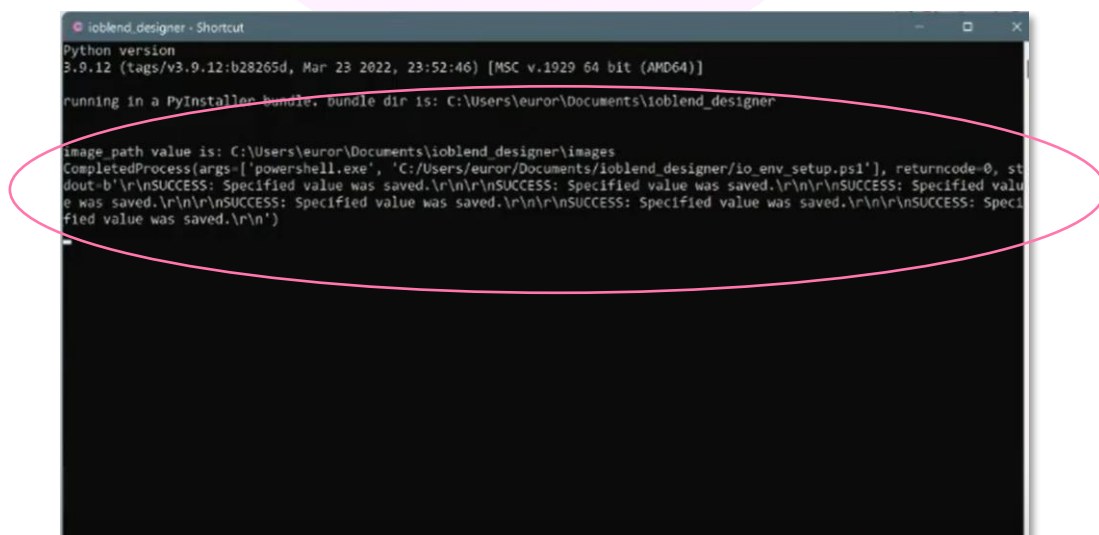
Make your data estate “state-of-the-art”

- Hit Enter.
- You should see something like the following:



```
Path=C:\WINDOWS\system32;C:\WINDOWS;C:\WINDOWS\System32\Wbem;C:\WINDOWS\System32\WindowsPowerShell\v1.0\;C:\WINDOWS\System32\OpenSSH\;C:\Program Files\NVIDIA Corporation\NVIDIA NVDLISR;C:\Program Files (x86)\NVIDIA Corporation\PhysX\Common;C:\Program Files (x86)\Eurocontrol\RSO Distance Tool\4.0\;%Systemroot%\system32;%Systemroot%\System32\Wbem;C:\WINDOWS\system32\WindowsPowerShell\v1.0\;%SYSTEMROOT%\System32\OpenSSH\;C:\Program Files\MySQL\MySQL Shell 8.0\bin\;C:\Users\euror\AppData\Local\Microsoft\WindowsApps;
PATHEXT=.COM;.EXE;.BAT;.CMD;.VBS;.VBE;.JS;.JSE;.WSF;.WSH;.MSC
PROCESSOR_ARCHITECTURE=AMD64
PROCESSOR_IDENTIFIER=Intel64 Family 6 Model 142 Stepping 10, GenuineIntel
PROCESSOR_LEVEL=6
PROCESSOR_REVISION=8e0a
ProgramData=C:\ProgramData
ProgramFiles=C:\Program Files
ProgramFiles(x86)=C:\Program Files (x86)
ProgramW6432=C:\Program Files
PROMPT=$P$G
PSModulePath=C:\Program Files\WindowsPowerShell\Modules;C:\WINDOWS\system32\WindowsPowerShell\v1.0\Modules
PUBLIC=C:\Users\euror\Public
SESSIONNAME=Console
SystemDrive=C:
SystemRoot=C:\WINDOWS
TEMP=C:\Users\euror\AppData\Local\Temp
TMP=C:\Users\euror\AppData\Local\Temp
USERDOMAIN=DESKTOP-H3CK818
USERDOMAIN_ROAMINGPROFILE=DESKTOP-H3CK818
USERNAME=euror
USERPROFILE=C:\Users\euror
windir=C:\WINDOWS
__PSLockDownPolicy=0
C:\Users\euror>
```

- Select the entire list of the existing environmental parameters, copy and save them in a text file somewhere safe.
8. Next, return to the Designer window and hit OK in the “Overwrite Environmental Variables” pop up box. It should take about a minute to update.
- Switch to the Script window and wait until the following message appears:



```
ioblend_designer - Shortcut
Python version
3.9.12 (tags/v3.9.12:b28265d, Mar 23 2022, 23:52:46) [MSC v.1929 64 bit (AMD64)]
running in a PyInstaller bundle. bundle dir is: C:\Users\euror\Documents\ioblend_designer
image_path value is: C:\Users\euror\Documents\ioblend_designer\images
CompletedProcess(args=['powershell.exe', 'C:/Users/euror/Documents/ioblend_designer/io_env_setup.ps1'], returncode=0, st
dout=b'\r\nSUCCESS: Specified value was saved.\r\n\r\nSUCCESS: Specified value was saved.\r\n\r\nSUCCESS: Specified val
e was saved.\r\n\r\nSUCCESS: Specified value was saved.\r\n\r\nSUCCESS: Specified value was saved.\r\n\r\nSUCCESS: Spec
ified value was saved.\r\n')
-
```

Note, you should see six (6) “success” messages appear. IOblend has now successfully updated the Environmental variables. We will refine and simplify this process in the future versions to make it easier for you to get going.

**Congratulations, you are now ready to build your first production-grade data pipeline with IOblend!**

See the “How to build your first data pipeline” section **to learn how to do it.**

